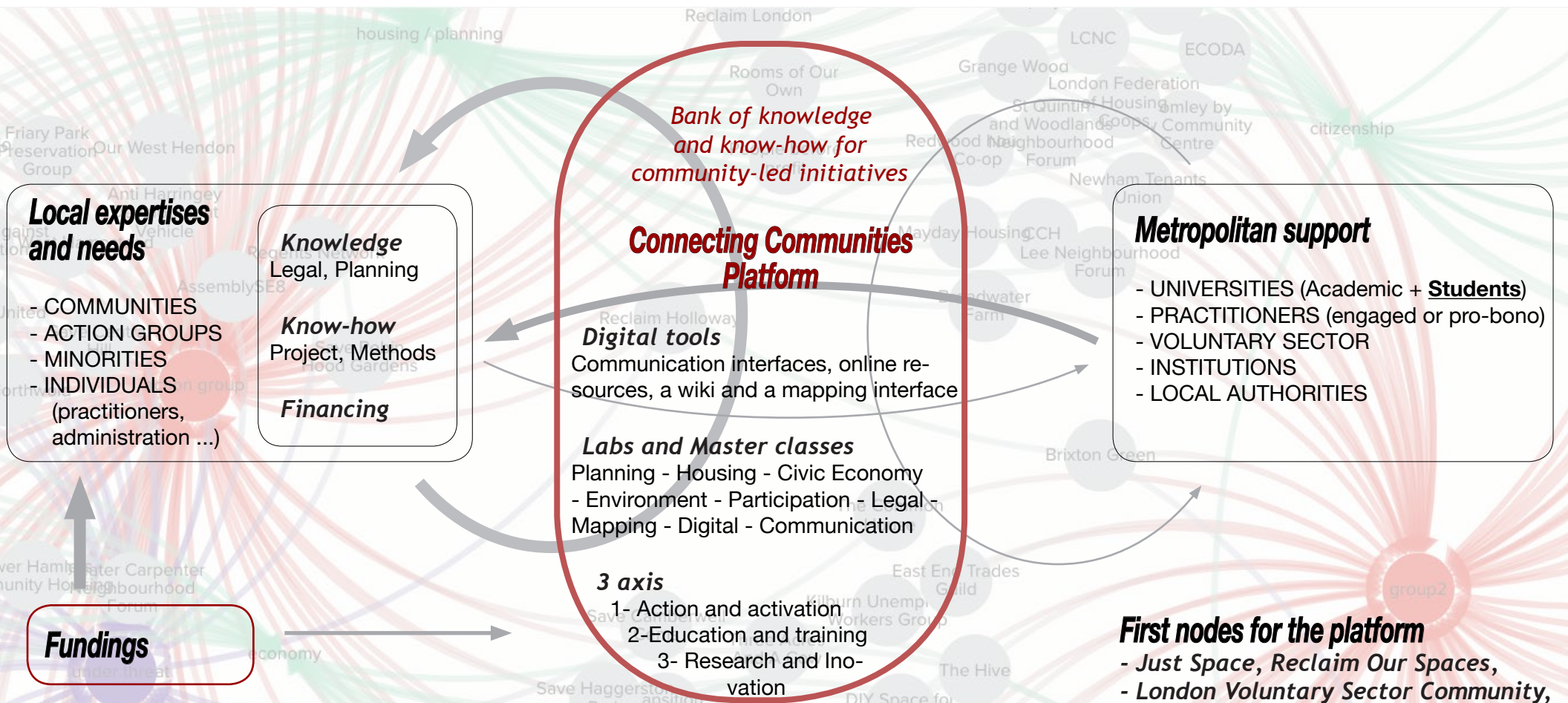


A platform to organise community collaboration and co-production

with each other and with universities, practitioners and possibly local authorities.



- First nodes for the platform**
- Just Space, Reclaim Our Spaces,
 - London Voluntary Sector Community,
 - Our Way Ahead,
 - Connecting Londoners,
 - Civic Wise,
 - some UCL teachers,
 - potentially also some from Goldsmith and the London Metropolitan

Interactive mapping of the expertises, needs, supports and funding can be a useful interface to organise and coordinate these connections.
(geographical as well as conceptual mapping)

Slide 4- The Connecting Communities platform :

This slide is an illustration of how this rich set of data and visualisations could be used to organise collaboration and co-production. Between communities themselves but also with universities, practitioners and possibly local authorities (as we hope to convince the GLA) .

1.How to share the specific expertise of each particular grass root community groups. How to create with it a bank of knowledge (on legal issues, planning issues, community gardening...) and know-how (how to register an asset of community value, how to foster participation, how to oppose a disruptive planning application ...)

2.How to track the fundings and make them reach grass root community groups.

3.How to connect important metropolitan supports to the platform and community groups. (how to get support from students, how to get in touch with pro bono practitioners, and so on...)

Interactive mappings of the expertises, needs, supports and funding are essential interfaces to organise and coordinate these connections.

The map would be just one tool of this collaborative platform that we could also describe as a Civic Innovation School (a concept from CivicWise). It would includes other open digital tools than the mapping (online resources, a wiki and a communication interface) + a series of labs and master classes dedicated to community-led issues (planning, training, medias, time banking, festivals...).

We are at the very beginning of these reflections but we presume that **this project doesn't need so much funding to start because it is all about coordination**, if we can convince the potential metropolitan supports to collaborate.

Mapping is an essential tool for the future platform

CONNECTING COMMUNITIES PLATFORM

Geographical mapping

- FACE TO FACE
- POPULAR EVENTS
- LOCAL & METROPOLITAN

Network mapping

- TRACK FUNDINGS
- CONNECTING NEEDS AND SUPPORTS
- COLLECTIVE ACTION

Topics mapping

- ISSUES AND THEMES
- EXPERTISES and NEEDS
- CONVERGING CAMPAIGNS

*A platform for network building, sharing knowledge
and collective action*