

Nicolas FONTY

architect_urban designer
independent researcher
autodidact cartographer



COMMUNITY-LED PLANNING + TERRITORIAL STUDIES + URBAN PROJECTS

- K** 2017 : **ELEPHANT & WALWORTH Neighbourhood Forum**, mapping support and organisation of events for more outreach and inclusion.
- J** 2017 : **BLACK TO THE FUTURE** : mapping support to The UBELE Initiative to map community assets and references for London young black people.
- 30** 2016 : **COOP_6 ROUTES** : organisation of a community festival in La Courneuve/ Paris to foster cooperation between local organisations ; with **FACE**
- B** 2017 : **JUSTMAP: collaborative mapping for community-led London planning**, series of workshops in collaboration with Just Space.
- 24** 2015 : **ARC-EN-SEINE** : to federate a territorial project around the north arc of the river Seine (11 cities from 95, 93 and 92) / STUDIO 14, **Secchi + Viganò**
- 18** 2013 : **«TO LIVE IN THE GREATER PARIS»** : life cycles, urban continuities, horizontal metropolis. Atelier International du Grand Paris / STUDIO 13, **Secchi + Viganò**
- VI** 2013 : **BORDEAUX / CUB : 55 000 hectares of nature**, recovering natural spaces in the CUB, M. Corajoud-A. Lortie team.
- 14** 2011 : **A3 / A86 - BONDY BRIDGE** : reorganization of the sector and the interchange, study directed by **A. Lortie** -architect.
- V** 2010 : **LAUSANNE : urban project of an eco-neighborhood** (5000 inhabitants and 2000 jobs) competition directed by A-CARRÉ agency.
- 09** 2006 : **SCEAUX, morphological and regulation analysis of a nearly ordinary urban municipality**, (Choiseul)
- 05** 2005 : **BATIGNOLLES OG 2012** : density, diversity and flexibility, agency study (2-3-4) and Paris-Malaquais teaching workshop.
- 04** 2005 : **PLAINE-DE-FRANCE and PARIS : the issue of their relationship**, **A. Lortie** agency study.

- 2017, **MRes in Interdisciplinary Urban Design**, UCL/ Bartlett School of Planning, nearly completed.
- 2004, **MRes in Urban Design**, Architecture School of Paris-Belleville and PARIS VIII University.
- 2000, **Architecture Diploma Degree**, Architecture School of Paris-Belleville (ENSAPB).
- 1992, **Bachelor Degree in Mathematics**, PARIS VI University and admission in École Centrale Lille, engineers school.

Fluent languages : french, english, spanish.
Softwares (++) : Autocad + Adobe (Photoshop, Illustrator, InDesign)
Softwares (+) : GIS softwares (ArcGis + Qgis + Carto), Kumu, Xcel
Softwares (-) : R, Sketch-Up
Freelance

Grades of territorial scales approached :
XL (02. 10. 11. 12. 17. 18. 20. 21. 23. I. III. VI)
L (01. 02. 04. 11. 12. 13. 18. 19. 24. 25. 27. IV. V)
M (01.06.08.09.13.14.15.16.18.19.22.23.24. V.VII)
S (01. 03. 05. 07. 12. 15. 22. V)
**A to K : London / 01 to 30 : greater Paris
I to VII : elsewhere**

RESEARCH + PUBLICATIONS

- H** 2017: **The role of mapping for community-led planning in London**, PhD proposal, Bartlett School / UCL
- EF** 2017 : **LIVING MAPS: section editor** of the online review + paper in issue #2 :
2016 METROPOLISES, MAPS and PLANNING.
- D** 2016 : **Call to the London mappers community**, article published in *Civic Practices*, CivicWise and Lugadero, 2017.
- A** 2016 : **OUR KIND OF TOWN**: ongoing project towards a London's future citizen atlas with the group Living Maps
- 23** 2016 : **www.OCCUPY.fr** : ongoing project to develop **collaborative cartography in the Greater Paris** ; based on public workshops during community fairs.
- 21** 2014 : **Banlieue is Beautiful, construction of a collaborative map on the creation in the greater Paris** ; in direct relation with BiB_the festival (Monte Laster), Palais de Tokyo Museum, may 2014.
- 13** 2011 : **“LA DÉFENSE” AN ATLAS, history and territory**, Parenthèses Editions, 2014. Edited by P. Chabard and V. Picon-Lefèvre
- 12** 2008 : **THE POROUS CITY, analysis and prospective of the Greater Paris**. AIGP / STUDIO 09 team, **Secchi + Viganò**
- 11** 2008 : **LEARNING TO DECODE URBAN NEBULAS, PARIS/BARCELONA** project research in collaboration with UPC-Barcelona, Carlos Llop.
- 02** 2004 : **CONTEXTUAL vs GENERIC, a graphic and historic exploration of the parisian nebula**, Master in Urban Design. **Dir : A. Lortie**
- I** 2001 : **SANTIAGO, CHILE** : workshop proposal, representations of the Greater Santiago, in collaboration with the USACH
- 01** 1999 : **THE CITY OF THE PÉRIPHÉRIQUE** (parisian ring road) **with Tomato team, Ordinary / Extraordinary**, Le Moniteur editions, 2003.

TEACHING + LECTURES + EVENTS

- F** 2017 : **JustMap, 6 events / workshops** : ICA, Tate Modern, Conway Hall, 2016 London Met. University, Land for What?, Just Space conference
- 29** 2016 : **SMALL ACTS, towards a grass-root cooperative planning** : a one week intensive workshop, Paris-Belleville Architecture School, with B. Mariolle
- C** 2017 : **JustMap, 10 lectures or presentations** : UCL /Bartlett in different departments (x6), UAL / Chelsea, London City Hall, Living Maps seminar
- VII** 2015 : **Teaching the OCCUPY cartographic tool** : 2 days workshop in the Aachen University School of Architecture with Pr. Lutz Robberts
- 28** 2015 : **Greater Paris metropolitan public spaces** : organization of a one week students workshop in Saint-Denis for EPFL / P. Viganò / Studio_015.
- 26** 2015 : **CO-OP : cartographic workshops with 5th Gr. kids**, Joliot-Curie School in La Courneuve / Paris, with Face/ Artist Monte Laster.
- 25** 2014 : **WEST SEINE VALLEY** : a one week intensive cartography + modeling workshop, Paris-Belleville Architecture School, with B. Mariolle and B. Laurencin.
- 22** 2014 : **THE GREATER PARIS, history of its formation**, conference and animation of a workshop for the *Université Populaire de la Ville de Paris*.
- 13** 2011 : **DIY CARTOGRAPHY**, conference presented at the Architecture school of Lille, research project directed by B. Grosjean.
- III** 2009 : **BARCELONA : a model for the porous city**, 4 conferences presented at the Architecture Schools of Marne (Vigier Kolher, Trévelo, Beltrando), Belleville (F. Bertrand) and Barcelona (**C. Llop**)
- 05** 2005 : **BATIGNOLLES, URBAN PROJECT WORKSHOPS**: 2 semesters at the Architecture School of Paris-Malaquais. with J. Treuttel.
- II** 2004 : **KRIVA PALANKA / MACEDONIA : guest teacher at a summer workshop**, dynamisation of abandoned industrial territories.

jan.17	Our Way Ahead / Networked City
dec.16	CivicWise
june.16	Reclaim Our Spaces
jan.16	Just Space
nov.15	Living Maps
sep.15	The Bartlett/UCL

jul.17	Elephant & W. Forum	community groups
mar.17	Ilford NOISE	
jan.17	Our Tottenham	
oct.16	Millbank MCW	
june.16	Deptford DNA	
oct.16	Granville K. Sth Kilburn	

strong links

	3 volunteers
20 people	2 sessions
60 people	email list

justMap working group

jun.17	Justice 4 Grenfell	community groups
may.17	Westway 23 + RAP 23	
oct.16	Silvertown +N. Woolwich	
mar.16	Old Oak / Willesden	

aug.17	School / Soc. Entrepreneurs
jul.17	Architects 4 Social Housing
may.17	The UBELE initiative
apr. 17	Data for Housing Justice
feb.17	Urban Lab / UCL
feb.17	Ecodea / Urban Resilience
jan.17	London Voluntary S C
jan.17	Peers Production Review
jan.17	Reclaim London
dec.16	Mapping for Change
dec.16	Open Street Map
nov.16	Land Justice Network
mar.16	Concrete Action
feb.16	Public Works

weaker links

Cooperations with more than 30 groups



14 workshops

9 lectures / presentations

7 papers / publications

Mapping

6 London events	ICA /invited by ASH	aug..17
	Civic University / Tate Modern	feb.17
	Land for What ? / Holloway	nov.16
	Reclaim Our Spaces / Conway Hall	june.16
	Just Space conference / UCL	april.16
	Our Way Ahead / London Met. U.	jul.17
8 local workshops	Elephant & Walworth Nbd Forum	aug..17
	3x South Kilburn /Granville Kitchen	mar.17
	Millbank/ local community+students	jan.17
	2x Deptford / neighbourhood festivals	june.16
	Old Oak / local community	mar.16

UCL Engineering Exchange	jul..17
Urban Lab /UCL	feb.17
City Hall with LVSC	feb.17
School of Planning /Bartlett	feb.17
Chelsea College / UAL	jan.17
Goldsmith	oct.16
Summer Lab / DPU / Bartlett	sep.16
Living Maps seminar	june.16
Just Space conference	apr.16

Civic Practices (collective book)	march.17
Living Maps Review (online)	march.17
PhD proposal	dec.16
justMap presentation in 4 pages	nov.16
justMap, 6 working avenues	oct.16
Report for Just Space	mar.16
justMap website	feb.16-17

14 workshops
300 collected data
6 geographical mapping visualisations online
1 network mapping visualisation online

community mapping support

see strong links section
+ Grenfell + The Ubele Initiative
+ Migrants & Refugees Network
+ Radical Film Network

+++ : STUDIES, NETWORKS, VISITED METROPOLISES, LANGUAGES

STUDIES

- 01 1988 : **Scientific baccaulaureate** (High school diploma)
- 02 1988 : Preparatory classes for engineering schools ("*Grandes Ecoles Scientifiques*")
1990 : Admitted, after having passed the entry competition at the **general engineering school *Ecole Centrale*, Lille, France.**
- 03 1991 : **Mathematics Bachelor Degree**
- 04 1991 : Bachelor's degree in architecture at the ***Ecole d'architecture Paris-Tolbiac*** with professors-architects Jacques Ziegler, François Leclercq and Jean Taricat.
- 05 1993 : Starting Master degree in architecture at the ***Ecole d'architecture Paris-Belleville*** with professors-architects Henri Ciriani and Edith Girard.
- 1995 : A master year at **Oporto School of Architecture in Portugal**
1996 : with professors-architects Fernando Batalha and Joaquim Dovelho. Financed by the european scholarship for studies **ERASMUS.**
- 1996 : Finishing Master degree in architecture ***Ecole d'architecture Paris-Belleville*** with professors-architects Antoine Grumbach, Bruno Fortier and Jacques Lucan.
- 1998 : **Architecture Diploma degree** resulting from a 13 students collective Diploma work, ***La Ville du Périphérique***, Tomato team. Congratulations by the jury composed by : A. Chemetoff, M.J. Dumont, B. Fortier, E. Girard, F. Leclercq, Y. Lion, J. Lucan, S. Marot, J. J. Millex and N. Starckman.
- 06 2004 : **Master research in Urban Studies (DEA)**, Architecture School of Paris-Belleville associated with the Paris VIII University. Dissertation directed by Stéphane Yérasimos and André Lortie.
«CONTEXTUAL vs. GENERIC»
A graphical and historical exploration of the peripheral urban forms of the Paris nebula, analysed through the territory of Aulnay-sous-Bois, Sevran, Villepinte and Tremblay municipalities.
- 07 2013 : **MOOC Coursera** : Mapping Revolution (University of Pennsylvania) + Designing Cities (Pennsylvania State University)
- 08 2015 : **MRes Interdisciplinary Urban Design, Bartlett School of Planning / UCL** : part time, nearly completed

NETWORKS

Civic Wise International + circles of London, Paris and Barcelona.

CivicWise is a distributed and open community. Its mission is to empower citizens by fostering collaborative urbanism, promoting civic innovation and inspiring civic engagement. The aim is to federate the collective intelligence by using and experiencing it through local actions. CivicWise promotes a better collaboration between general public, university, local business and local authorities.

Just Space London

Just Space is an important heterogeneous alliance formed in 2006 to act as a voice for Londoners at grass-roots level during the formulation of London's Mayor planning strategy. They also offer technical support to community through two of their members : Planning Aid for London and the Bartlett School of Planning, UCL.

Living Maps London

Living Maps Review is a journal for theory and practice in critical cartography and participatory social mapping. I am co-editor with Barbara Brayshay of the WAYPOINT section.

Face, La Courneuve / Paris

Member of **Face, non-profit association based in La Courneuve** (Paris north banlieue) and created by Artist Monte Laster. Face endeavours to inspire and empower local urban communities by way of a creative, micro-political exchange. <http://www.association-face.com/>

Three important projects have been carried out with Face.

-Public urban workshop led by architects and urban designers Bernardo Secchi and Paola Viganó.

<http://t1grandparis.blogspot.com.fr/>

- Festival Banlieue_is_Beautiful may 2014 in Palais de Tokyo Museum, Paris ; dedicated to culture in banlieues.

<http://www.banlieueisbeautiful.org/>

- Co-op, project in progress to create co-construction and cooperations dynamics in the 6 Routes community in **La Courneuve**, in relation to Identity, Art and Urban Renewal issues.

2015 : organization of cartographic workshops with 5th Gr. kids ; 2016 : mapping workshops with communities

2016 : workshops with architecture students ; 2016 : organisation of a festival on planning issues

<http://festival-coop.blogspot.fr> and <http://www.montelaster.com/#!/the-co-op/ci17>

VISITED METROPOLISES

London, Paris, Berlin, Milan, Veneto, Oporto, Lisbon, Barcelona, Istanbul.

Mumbai, Singapore, Bangkok, Ho Chi Minh, Tokyo

Los Angeles, Detroit, Montreal, New-York, New Orleans, Santiago de Chile

LANGUAGES

French : native language **Spanish + English**: fluent (reading, speaking, writing)

Italian and Portuguese : basic

- H** 2017: **The role of mapping for community-led planning in London**, PhD proposal, Bartlett School / UCL. An investigation on the network of London actors involved in mapping or planning and concerned by this question. *London, community-led planning, mapping actors data and tools, mapping visualisation, data visualisation, digital commons, smart city*
- EF** 2017 : **LIVING MAPS**: section editor of the online review dedicated to critical cartography and participative mapping. 2016 + paper in issue #2, **METROPOLISES, MAPS and PLANNING**: Cartographic Tools for London Community-led Metropolitan Analysis, Design and Planning. *critical cartography, participative mapping*
- D** 2016 : **Call to the London mappers community**, published in *Civic Practices*, CivicWise and Lugadero, 2017. Call to professional as well as DIY mappers **committed for a fairer London to cooperate** for a common mapping platform. *collaborative mapping, community data, commons*
- B** 2016 : **JUSTMAP**: collaborative mapping for community-led London planning, ongoing research in collaboration with Just Space. Project to build up a collaborative mapping platform for community data and alternative proposals to developers planning. *collaborative mapping, public workshops, inclusion, cooperative planning, web and GIS mapping, teamwork*
- A** 2016 : **OUR KIND OF TOWN**: ongoing project towards a **London's future citizen atlas** with the group **Living Maps**. Use of maps to represent the place intelligence of Londoners who are marginalised in the current development of urban policy. *community workshops, participatory toolkits, bottom-up vision, inclusion, atlas*
- 23** 2015 : **Founder of** www.OCCUPY.fr : ongoing project to develop **collaborative cartography in the greater Paris** 2013 based on community fairs. Ten public workshops till today and one territorial project using the Occupy method. *collaborative mapping, public workshops, inclusion, ludic interactivity, web and GIS mapping, teamwork*
- 21** 2014 : **Banlieue is Beautiful, construction of a collaborative map about the creation in the greater Paris** ; in direct relation with BiB_the festival (Monte Laster), Palais de Tokyo museum, may 2014. *collaborative mapping, ludic interactivity, stakeholders networking, teamwork*
- 18** 2013 : **«TO LIVE IN THE GREATER PARIS»** : life cycles, urban continuities, horizontal metropolis. **STUDIO 13** **Bernardo Secchi + Paola Viganò** for the *Atelier International du Grand Paris*. Besides the teamwork explained above, author of "Workshop" article for the July 2013 edition. *life cycles, public spaces and urban continuities, horizontal metropolis, industrial areas, housing crisis, participative workshops, disadvantaged districts*
- 17** 2013 : <http://brigandfute.com> : laureate proposal for the **Hackathon SDRIF 2030** ; *les Nettoyeurs* (Collignon, Fonty, Goossaert, Kovalenko, Zheng) *ludic interactivity, GIS mapping, interdisciplinary teamwork*
- 13** 2011 : **"LA DÉFENSE", AN ATLAS, history and territory**, Parenthèses Editions, 2014. Dir: Pierre Chabard + Virginie Picon-Lefèvre, 60 maps + time line in collaboration with Alvisé pagnacco. *cartography, forms of urban growth, morphogenesis*
- 12** 2008 : **THE POROUS CITY, analysis and prospective of the Greater Paris**. Research ordered by the french government / STUDIO 09 team, **Secchi + Viganò**. My work : parisian specific knowledge and advices, map and data production, concepts of mapping representation, ordinary monuments investigation, re-writing. *post-Kyoto metropolis, porosity, urban continuities, grid network transportation vs radio-concentric, city recycling, teamwork*
- 11** 2008 : **LEARNING TO DECODE URBAN NEBULAS, PARIS / BARCELONA** project research in collaboration with UPC-Barcelona, Carlos Llop. *comparative mapping, urbanization forms, historic national context*
- 10** 2007 : **CHEMISTRY OF THE PARISIAN NEBULA**, article published in *PARIS, ALCHEMY OF A METROPOLIS* Edited by T. Baudoin, F. Laisney and A. Térade / Recherches Editions, CNRS editions, 2008. *urbanization forms, urban form scales, morphogenesis, greater Paris periphery*

- 06 2005 :** **PUBLIC TRANSPORTATION and the regional consolidation**, article in Paris-Projets n°36-37.
- 02 2004 :** **CONTEXTUAL vs GENERIC, a graphic and historic exploration of the parisian nebula**, Master's research in Urban Design. **Director : André Lortie**
- I 2001 :** **SANTIAGO, CHILE** : workshop proposal, representations of the Greater Santiago, in collaboration with USACH
- 01 1999 :** **THE CITY OF THE PÉRIPHÉRIQUE (parisian ring road) with the Tomato team, Ordinary / Extraordinary**, Le Moniteur editions, 2003. Architecture diploma publication.

public transportation , radio-concentric and grid networks,

20th century forms of urban growth, urban form scales,, greater Paris periphery, Generic city (Koolhaas), Hypercity (Corboz)

metropolitan ring roads territory, Generic city

metropolitan ring roads territory, urbanization forms, morphogenesis, ordinary vs extraordinary planning, teamwork



E. METROPOLISES, MAPS and PLANNING: **Cartographic Tools for London Community-led Metropolitan Analysis, Design and Planning.**

Living Maps Review #2, 2017

In London, dozens of DIY mappers wish to map or are already mapping their community resources. Would it be possible to build a common platform for all the scattered community mapping projects across the metropolis? A platform that would support local and metropolitan cooperation, a platform that would support a collaborative London community-led plan?

D. Call to the London mappers community. **Collaborative mapping for community-led planning**

in Civic Practices, CivicWise and Lugadero, 2017

Building a collaborative mapping platform that collects and visualises a broad range of grass root data for a London community-led planning.

CivicWise is a distributed and open community of which I am a member. Its mission is to empower citizens by fostering collaborative urbanism, promoting civic innovation and inspiring civic engagement.



18. THE GREATER PARIS : a porous city and an horizontal metropolis.

Atelier International du Grand Paris / STUDIO 13, Secchi + Viganò, 2013.

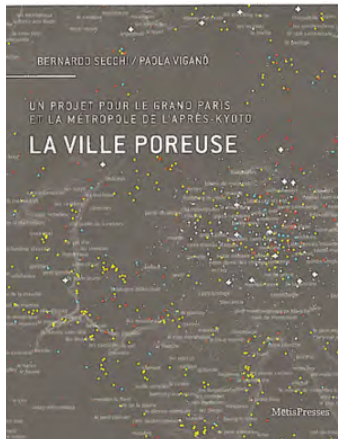
Paper on the participative urban design workshop in La Courneuve.



13. "LA DÉFENSE", AN ATLAS, history / territory. Edited by P. Chabard and V. Picon-Lefebvre. Parenthèses Editions, 2014

A timeline + 60 maps, produced with Alvisé Pagnacco collaboration.

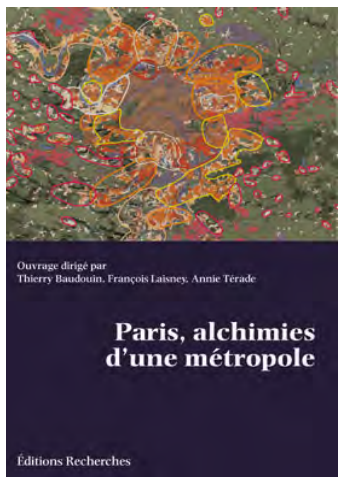
1. Mapping the simultaneous evolution of the territory from 1930 to 2011.
2. Schematic mapping of the *La Defense* project evolution from 1930 to 2011.
3. Mapping the chronological evolution of the territory from 1930 to 2011.
4. Thematic mapping of the current state.
5. Macroscopic data mapping of the current state.



12. THE POROUS CITY, A project for the Greater Paris and the post-Kyoto metropolis, B. Secchi and P. Viganó, 2011

Porosity is a key concept to reflect on the contemporary city. It is part of a renewed conception of mobility, which entangles the social and physical dimensions. Understood as a metaphor it is used to think the adaptability and stratifications of urban fabrics, water and vegetation.

Edition of the work produced for the Greater Paris future consultation, 2008-2009, by Studio 09 / Secchi-Viganó team with whom I worked for this research.



10. PARIS, ALCHEMY OF A METROPOLIS Edited by T. Baudouin, F. Laisney and A. Téraude / Recherches Editions, 2008

Article : *Chemistry of the Paris nebula:*

Distinction of different city forms : identification of the compact periphery (42% population), a transitional city form between central form hyper densities (29%) and dispersed urbanizations (22%).

Morphogenesis of the compact periphery : three periods of generic and massive urbanizations (P1: 30's houses from subdivisions, P2: 60-70's housing projects, P3: 80's business activities zones) and a parallel accumulation and sedimentation period of micro-operations (T//).



06+07. PARIS-PROJETS /apur, n° 36-37 ; Urban renewal and olympic games, edited by André Lortie and Christiane Blancot, 2006.

Two articles :

GARE DU NORD - GARE DE L'EST :
A new pole on the metropolitan scale.

PUBLIC TRANSPORTS : *a regional consolidation*



02. CONTEXTUAL vs GENERIC a graphic and historic exploration of the Parisian nebula, 2004. (Master research)

The analysis of the Paris morphogenesis, mostly made of moments of crises and massive urban growth, enables to identify important pieces of the metropolis puzzle.

Inside geographically or historically coherent territories, these generic urban growth forms adapt themselves on the context where they are set up.



01. THE "PÉRIPHÉRIQUE" CITY TOMATO collective, Le Moniteur editions, 2003.

Work studying a territorial form between Paris and its suburbs, a collage of a century and a half of the most important Parisian urban projects. A form of city very specific by its clear urban landscape with distant prospects, by its programs on metropolitan scale and by its monumentalised architecture "viewed from the road".

Article : *Ordinary / Extraordinary*, with Toma Damisch

COMMUNITY-LED PLANNING + TERRITORIAL STUDIES + URBAN PROJECTS 1/2

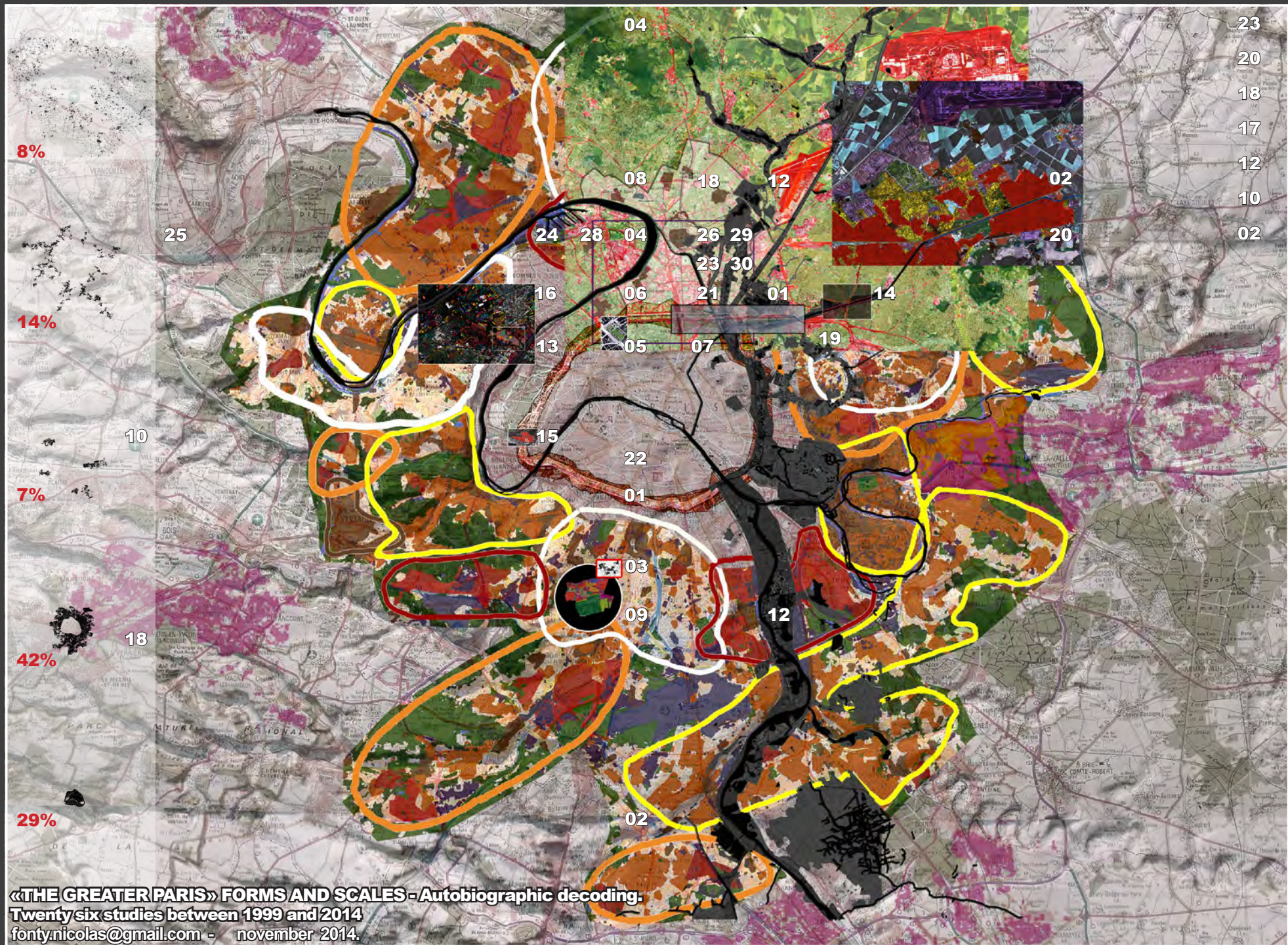
KEYWORDS

- K** 2017 : **ELEPHANT & WALWORTH Neighbourhood Forum**, mapping support and organisation of events for more outreach and inclusion. Mapping workshops in street festivals and creation of a **mapping game** as a treasure hunt around planning issues.
- community -led planing, cooperation, collaborative mapping, participatory processes*
- J** 2017 : **BLACK TO THE FUTURE** : mapping support to The UBELE Initiative to map community assets and references for London young black people. Focus on youth clubs and activities in London, Cologne and Amsterdam.
- identity, ethnic minorities, mapping to make visible and understand, inclusion of young people*
- 30** 2016 : **COOP_6 ROUTES** : organisation of a community festival in La Courneuve to foster cooperation between local organisations with local artists and activists **FACE**. Creation of a **mapping game** as a treasure hunt around planning issues.
- community -led planing, cooperation, collaborative mapping, participatory processes*
- 24** 2015 : **ARC-EN-SEINE** : to federate a territorial project around the north arc of the river Seine (300.000 inhabitants, 11 greater Paris municipalities from districts 95, 93 and 92). A twelve months study in progress led by architects-urban designers **STUDIO 14 Bernardo Secchi + Paola Viganò**.
My work : organization of cartographic public workshops, data compilation + cartographic synthesis to be used for the project.
- living with risk, territory vision (past and future), short and long terms actions, collaborative cartography, public spaces appropriation and events, porous city*
- 18** 2013 : **«TO LIVE IN THE GREATER PARIS»** : life cycles, urban continuities, horizontal metropolis. Twelve months study led by architects-urban designers **STUDIO 13 Bernardo Secchi + Paola Viganò** for the *Atelier International du Grand Paris*.
My work : atlas analyses production, multiple short thematic studies (industrial areas transformations (interviews of specific stakeholders), data on greater Paris housing crisis), data compilation + map production on ongoing projects in the northern greater Paris.
Organization and management on site (La Courneuve, 93) of a 10 days public workshop with 12 students from Lille and Venice ; invitation of various local stakeholders and community associations, workshop management.
- life cycles, public spaces and urban continuities, horizontal metropolis, industrial areas, housing crisis, participative workshops, disadvantaged districts*
- VI** 2013 : **BORDEAUX AGGLOMERATION (CUB) : 55 000 hectares of nature**, recovering natural spaces in the Bordeaux agglomeration, a one month study as project manager for landscaper Michel Corajoud and architect André Lortie.
- porosity, ecological continuities, public mobilities*
- 16** 2012 : **LES GROUES / LA DÉFENSE** : concepts for the development of a 10 hectares sports area, a one month study as project manager for BRUTHER -architects.
- metropolitan sport practices*
- 15** 2011 : **ROLAND-GARROS / AUTEUIL GLASSHOUSES**: cartographic research on the sites's genealogy, one month study as project manager for André Lortie -architect.
- historical sedimentation, sport urbanism*
- 14** 2011 : **A3 / A86 - BONDY BRIDGE** : reorganization of a complex highways interchange and the sector around, a 8 months study as project manager for **André Lortie - architect** with traffic specialists.
- infrastructures, urban renewal, road traffic, public transportation, public spaces*
- V** 2010 : **LAUSANNE : urban project of an eco-neighborhood** (5000 inhabitants + 2000 jobs) ; a 4 months competition subcontracted for A-CARRÉ agency. Constitution and leading of a multidisciplinary team.
- public space appropriation, urban agriculture, decentralised energy production, stadium conversion into public amenity*
- IV** 2010 : **CALAIS : urban development plan and strategic urban projects**, as project manager for Arcame agency.
- diagnostic, clues for urban projects*

COMMUNITY-LED PLANNING + TERRITORIAL STUDIES + URBAN PROJECTS 2/2

KEYWORDS

- 09 2006 :** **SCEAUX, morphological and regulation analysis of a nearly ordinary urban municipality**, as project manager for Choiseul agency. *ordinary forms of urban growth, urban landscapes, regulation urban planning*
- 05 2005 :** **BATIGNOLLES Olympic Games 2012** : density, diversity and flexibility, as project manager for 2-3-4 agency and Paris-Malaquais teaching workshop. *flexible building typologies, high density organizations*
- 04 2005 :** **PLAINE-DE-FRANCE and PARIS : the issue of their relationships**, as project manager for **A. Lortie**. *land use and cover typologies, densities, strategies*
- 03 2004 :** **BAGNEUX : diagnostic of a nearly ordinary *grand ensemble***, as project manager for Arcame agency. *housing projects, modern heritage, green sedimentation*



TEACHING + LECTURES + EVENTS

KEYWORDS

- E** 2016 : **JustMap, 6 events / workshops** : ICA, Tate Modern, Conway Hall, London Met. University, Land for What?, Just Space conference
collaborative mapping, community data, internet commons, professional and DIY mappers
- 29** 2016 : **SMALL ACTS, towards a grass-root cooperative planning** : a one week intensive workshop, Paris-Belleville Architecture School, with B. Mariolle
community planing, cooperation, collaborative mapping, participatory processes
- C** 2016 : **JustMap, 10 lectures or presentations** : UCL /Bartlett in different departments (x6), UAL / Chelsea, London City Hall, Living Maps seminar on Citizen Science.
collaborative mapping, public workshops, inclusion, cooperative planning, web and GIS mapping, teamwork
- VII** 2015 : **Teaching the OCCUPY cartographic tool** : 2 days workshop in the Aachen University School of Architecture with Pr. Lutz Robberts.
collaborative cartography, economic crisis and space modifications in Athens
- 28** 2015 : **Metropolitan public spaces** : organization of a one week students workshop in Saint-Denis for the Lausanne Federal Polytechnic School (EPFL) with Pr. Paola Viganó and Studio_015 Secchi-Viganó.
greater Paris, public spaces, Seine riverbanks recovery, nautic leisures, livng with the flood risk
- 27** 2015 : **The 4000 Grand Ensemble, coordinate local expectations and metropolitan projects**, one week intensive workshop with many nterviews of the 15-25 years old, Paris-Belleville Architecture School, with Béatrice Mariolle.
tactical urbanism, community participation, urban renewal, ecological urbanism
- 26** 2014 : **CO-OP : cartographic workshops with 5th Gr. kids**, Joliot-Curie School in La Courneuve, with Face /Artist Monte Laster.
collaborative cartography, identity, urban renewal,
- 25** 2014 : **WEST SEINE VALLEY : one week intensive cartography + modelling workshop**, Paris-Belleville Architecture School, with Béatrice Mariolle and Bernadette Laurencin.
territorial exploration, GIS, cartography, models, representation techniques, flooding risk, teamwork
- 22** 2014 : **PARISIAN PUBLIC SPACES**: one week intensive workshop, Paris-Belleville Architecture School, with André Lortie and Virginie Picon.
public spaces grammar, representation techniques, teamwork
- 20** 2013 : **THE GREATER PARIS, history of its formation**, conference and animation of a workshop for the *Université Populaire de la Ville de Paris* with the Metropop association.
greater Paris morphogenesis, participation workshop
- 19** 2013 : **PORTE DES LILAS / ROSNY-sous-BOIS : one week intensive cartography workshop**, Paris-Belleville Architecture School, with Béatrice Mariolle and Bernadette Laurencin.
territorial exploration, GIS, cartography, representation techniques, teamwork
- 13** 2011 : **Do It Yourself CARTOGRAPHY**, conference presented at the Architecture school of Lille, research project directed by Bénédicte Grosjean.
cartography and representation, techniques and DIY cartography,
- 12** 2011 : **THE POROUS CITY(SECCHI-VIGANÓ)**, 3 conferences presented at the Architecture School of Barcelona / UPC (Pr. Carlos Llop, Miquel Martí and Angel Martin)
post-Kyoto metropolis, porosity, urban continuities, grid network transportation vs radio-concentric, city recycling
- III** 2009 : **BARCELONA : a model for the porous city**, 4 conferences presented at the Architecture Schools of Marne (Vigier-Kolher, Trévelo, Beltrando), Belleville (Frédéric Bertrand) and Barcelona (Carlos Llop)
porosity, metropolitan structures, metropolitan imaginaries, urban forms of growth
- 08** 2006 : **PLAINE-SAINT-DENIS, palimpsest of a mutating territory**, workshops at the Paris-Belleville Architecture School, with Nicole Eleb.
palimpsest, morphogenesis, permanencies and persitences
- 05** 2005 : **BATIGNOLLES, URBAN PROJECT WORKSHOPS**: 2 semesters at the Architecture School of Paris-Malaquais. with Jérôme Treuttel.
urban project, density
- II** 2004 : **KRIVA PALANKA / MACEDONIA : guest teacher at a summer workshop**, bringing new dynamism for abandoned industrial territories.
economic vitality, industrial areas conversion, teamwork

ARCHITECTURE

- 20** 2016 : **APARTMENTS INTERIOR DESIGN**
2013 (75+92+93+94). Ongoing association with ALBU,
building trade company.
- 19** 2012 : **51 DWELLINGS OF COLLECTIVE HOUSING,**
Saint-Denis (93). Michel Guthmann studio.
- 18** 2009 : **NATIONAL SCHOOL OF ARCHIVISTS (2500m2),**
Paris (75). Choiseul Studio.
- 17** 2009 : **60 INDIVIDUAL AND COLLECTIVE DWELLINGS,**
Courtry (77). Badia-Berger studio
- 16** 2008 : **600 STUDENTS MIDDLE SCHOOL, Sarcelles (95).**
Alain Gignoux studio.
- 15** 2008 : HEC school rehabilitation, Jouy-en-Josas (78).
Choiseul Studio.
- 14** 2008 : **57 INDIVIDUAL AND COLLECTIVE DWELLINGS,**
Les Ulis (91). André Lortie studio
- 13** 2008 : **6 DWELLINGS WOOD CONSTRUCTION BUILD-**
ING, Montreuil (93). GRAAM studio
- 12** 2007 : **MILITAIRY HOUSING, Vilacoublay (78).**
Choiseul Studio.
- 11** 2006 : **4 DWELLINGS HOUSING, Bezons (95).**
Alex Prigent, architect.

- 10** 2006 : **HOUSE INTERIOR DESIGN, Saint-Leu-La-Forêt**
(95). Alex Prigent, architect.
- 09** 2005 : **DUPLEX INTERIOR DESIGN, Pantin (93).**
Independent.
- 08** 2006 : **FLEXIBLE and MIXED TYPOLOGIES,**
Batignolles / OG_2012. 2-3-4 Studio.
- 07** 2004 : **40 DWELLINGS IN COLLECTIVE HOUSING, St-**
Denis (93). Pierre Riboulet and Choiseul Studio.
- 06** 2004 : Central police headquarters, Bobigny (93).
2-3-4 Studio.
- 05** 2003 : Retirement home, Pantin (93).
Jeux de Plans studio.
- 04** 2003 : **RENOVATION OF 182 HOUSING APARTMENTS,**
Clichy (92). Camfrancq et Fanti, architects.
- 03** 2001 : Varèse 600 students middle school, Paris (75).
Alain Gignoux studio.
- 02** 2000 : **SEALIFE AQUARIUM (2700m2), inside Val**
d'Europe mall, Serris (77). Bindings and site
supervision for british clients. AW2 studio
- 01** 1999 : **PARISIAN APARTMENTS INTERIOR PLANNING,**
Paris (75). Independent.

Non parisian projects

- IX** 2010 : **SCHOOL+MULTI-PURPOSE HALL +PLACE**
SQUARE, Chavannes (Lausanne, Switzerland).
Subcontracted for A-Carré studio.
- VIII** 2007 : **54 DWELLINGS IN COLLECTIVE HOUSING, Sant**
Adrià del Besos (Barcelona, Spain). Agence Emili
Donato
- VII** 2007 : **UTBM university building (5000m2), Montbéliard.**
Alain Gignoux studio.
- VI** 2007 : 18 dwellings in collective housing, Le Havre.
Alain Gignoux studio.
- V** 2006 : **14 INDIVIDUAL HOUSES + 23 COLLECTIVE**
DWELLINGS, Cornebarieu (Toulouse). André
Lortie studio.
- IV** 2005 : **70 COLLECTIVE DWELLINGS, Belinzona (Swit-**
zerland). Associated with Oliviero Mossier.
- III** 2004 : **LIBRARY (3000 m2), Autun (Bourgogne)**
Choiseul studio.
- II** 2003 : **SINGLE FAMILY HOUSE, Le Pouliguen (La**
Baule). Associated with Alexandre Thériot
- I** 2001 : **PRIVATE MUSEUM (400m2), Santiago de Chile.**
Bruno Barla studio.

housing

community
facility

offices

draftsman (normal) / **PROJECT MANAGER (in BOLD)**

competition / draft

building permit /
preliminary

construction
documents

construction
work supervision